

Cannabinoids

Perception of Harm



Vermont Crash Data



CANNABIS ON VERMONT ROADWAYS: TRENDS IN CRASH AND IMPAIRMENT DATA

Sergeant Jay Rigger
Vermont State Police
Traffic Safety Unit

2019 NORTHEAST TRANSPORTATION SAFETY CONFERENCE

OBJECTIVE



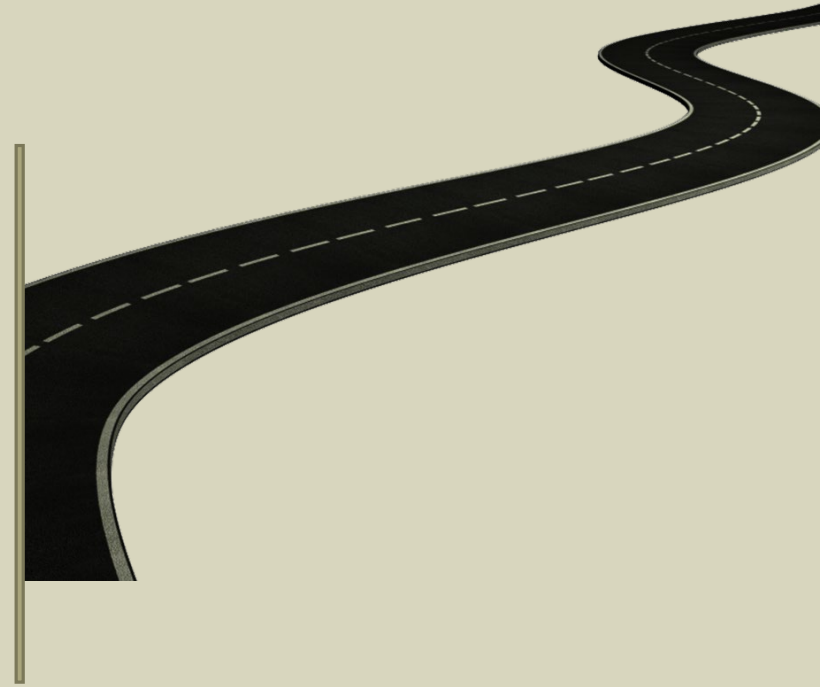
Increase awareness of Cannabis' presence in Vermont crashes



Reduce the harm caused by misrepresentations and deception
by *weaponizing* **ambassador knowledge**

THE ROADMAP

- Define “Cannabinoids” and their interaction with the Central Nervous System
- Identify the perception of harm as it relates to cannabis use
- Quantify the presence of cannabis in Vermont crashes

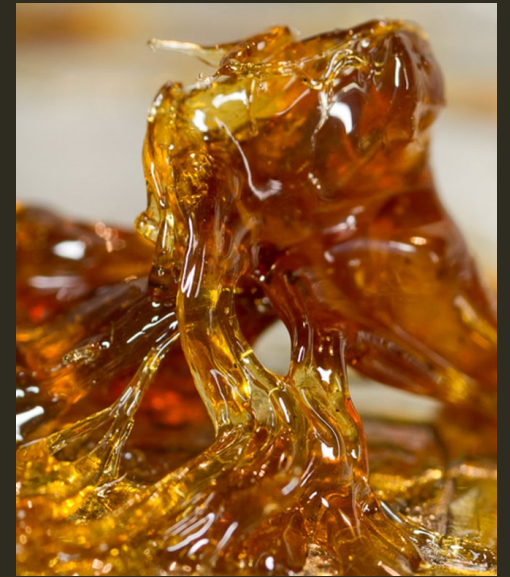


WHAT ARE CANNABINOIDS?

- Δ^9 -tetrahydrocannabinol
 - (THC) is the primary psychoactive ingredient
- >500 chemicals
 - e.g. Terpenes, polyaromatic hydrocarbons
- >100 cannabinoids
 - e.g. Cannabidiol, cannabitol

WHAT ARE CANNABINOIDS?

- Common products:
 - Marijuana
 - THC Oil
 - Edibles
 - Synthetic
 - Hash
 - Hash oil



THE PERCEPTION OF HARM

- 2017 Vermont Youth Risk Behavior Survey:
 - **66%** report their parents would think it is wrong for them to use alcohol (**2015: 72%**)
 - **76%** report their parents would think it is wrong for them to smoke marijuana (**2015: 80%**)
 - **36%** believe binge drinking regularly “greatly risks harm”
 - **24%** believe using marijuana regularly “greatly risks harm”

VPR AND VPT POLL

Is the fact that you are very or somewhat likely to use marijuana in the coming year due to the fact that the Vermont legislature legalized the possession of small amounts of marijuana for personal use, or is that law irrelevant to your decision?

23% Because of law

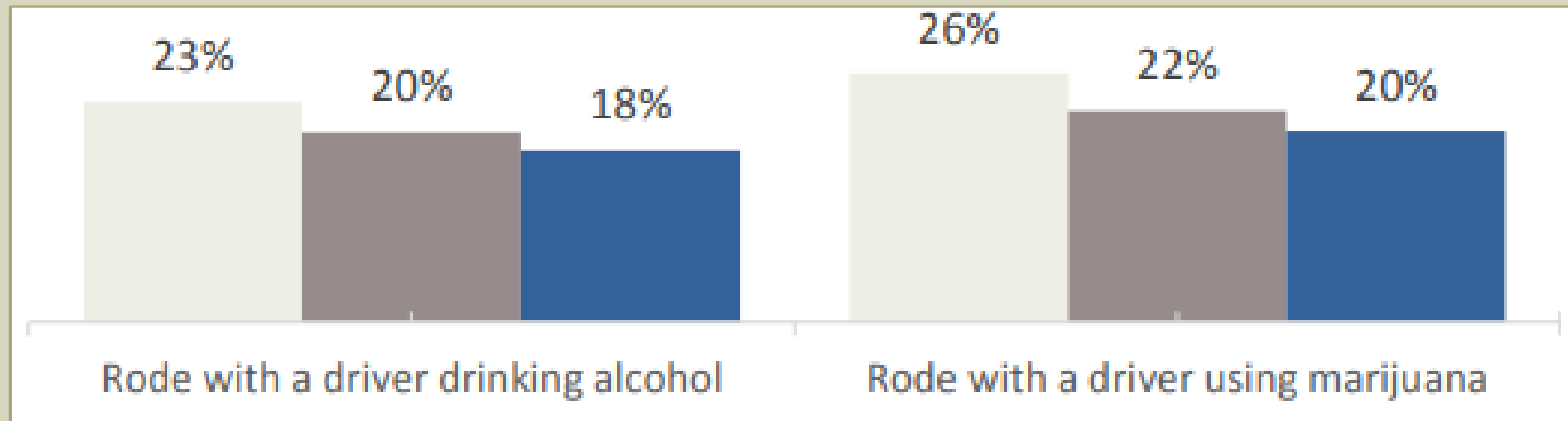
73% Irrelevant

4% Don't know/Refused

148 Total Respondents

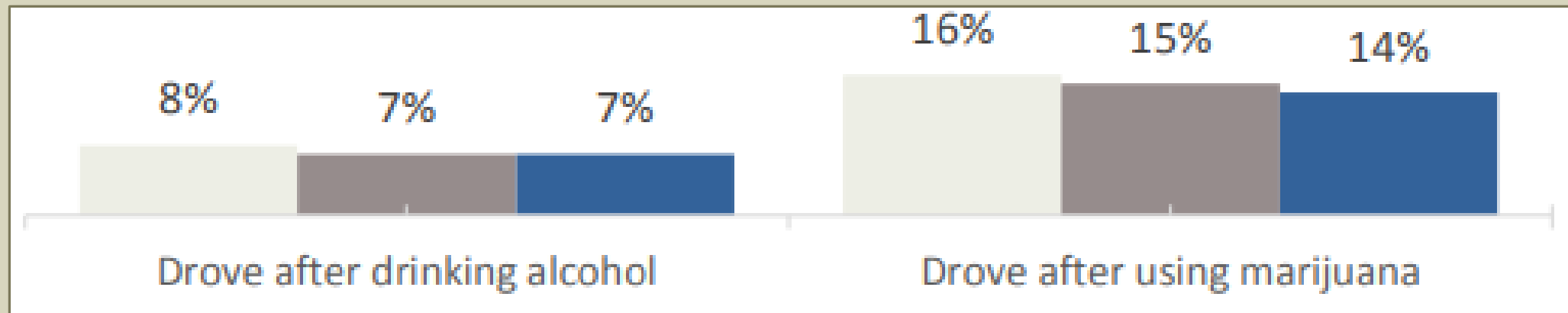
THE PERCEPTION OF HARM

In the past 30 days...

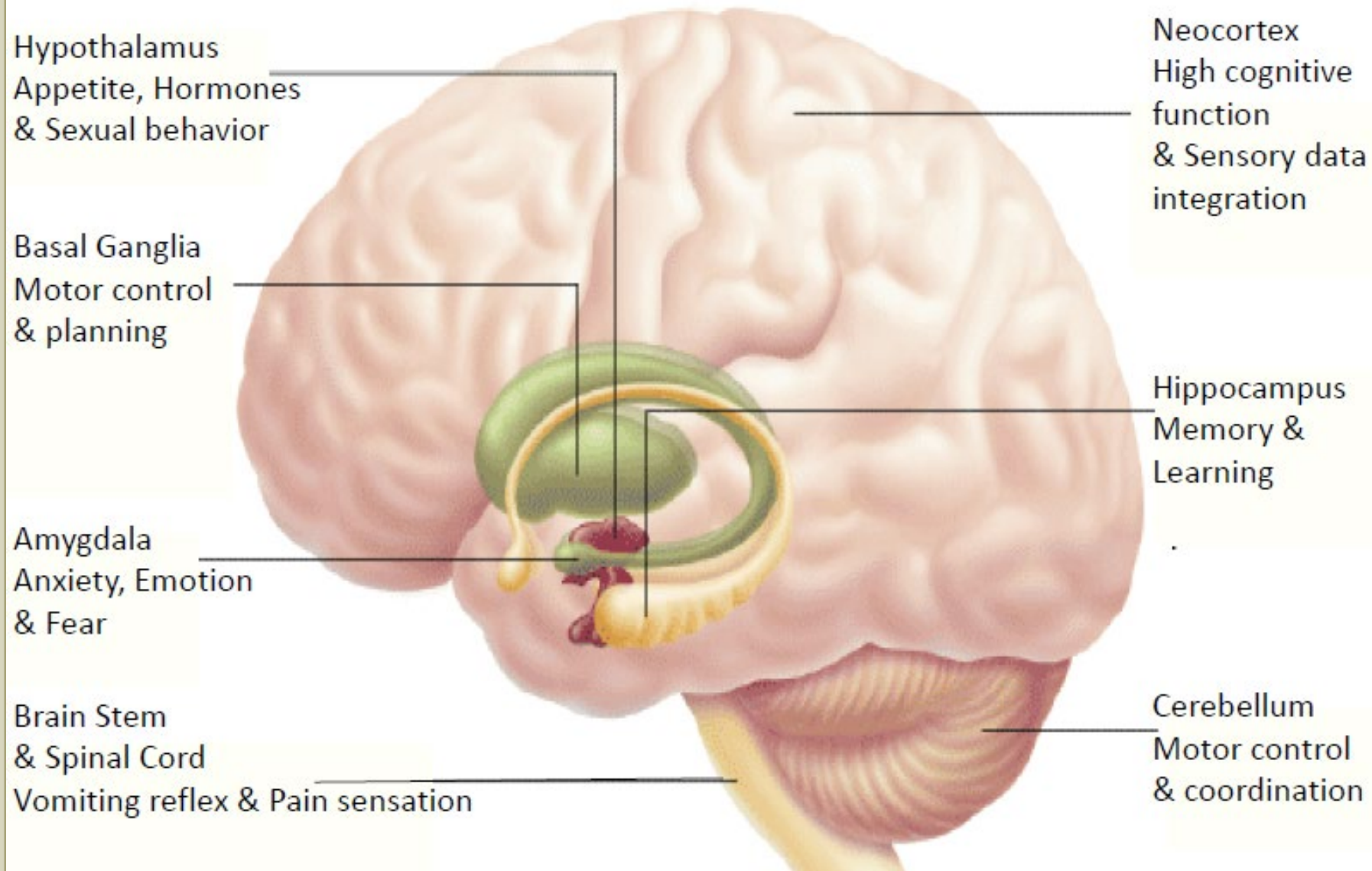


THE PERCEPTION OF HARM

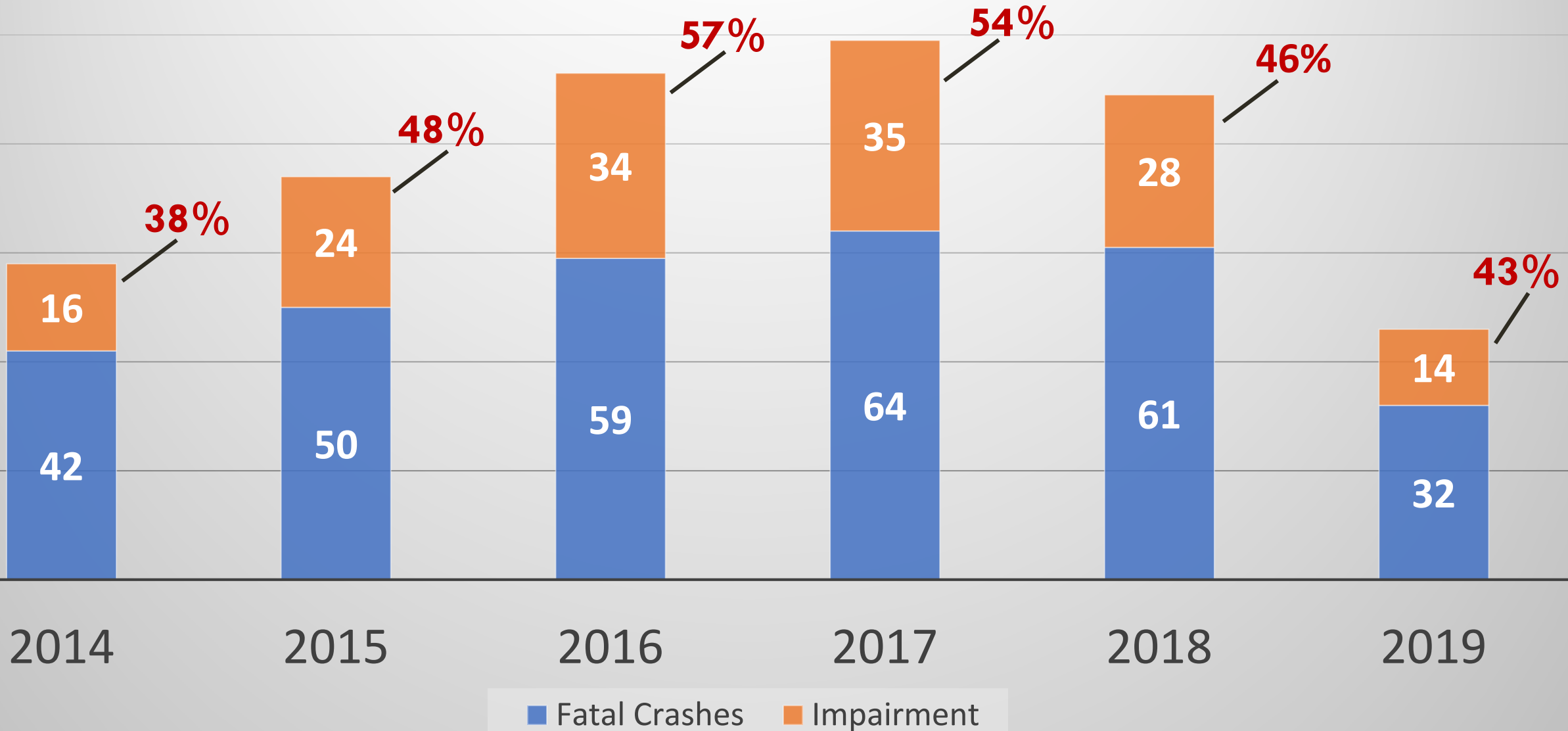
In the past 30 days...



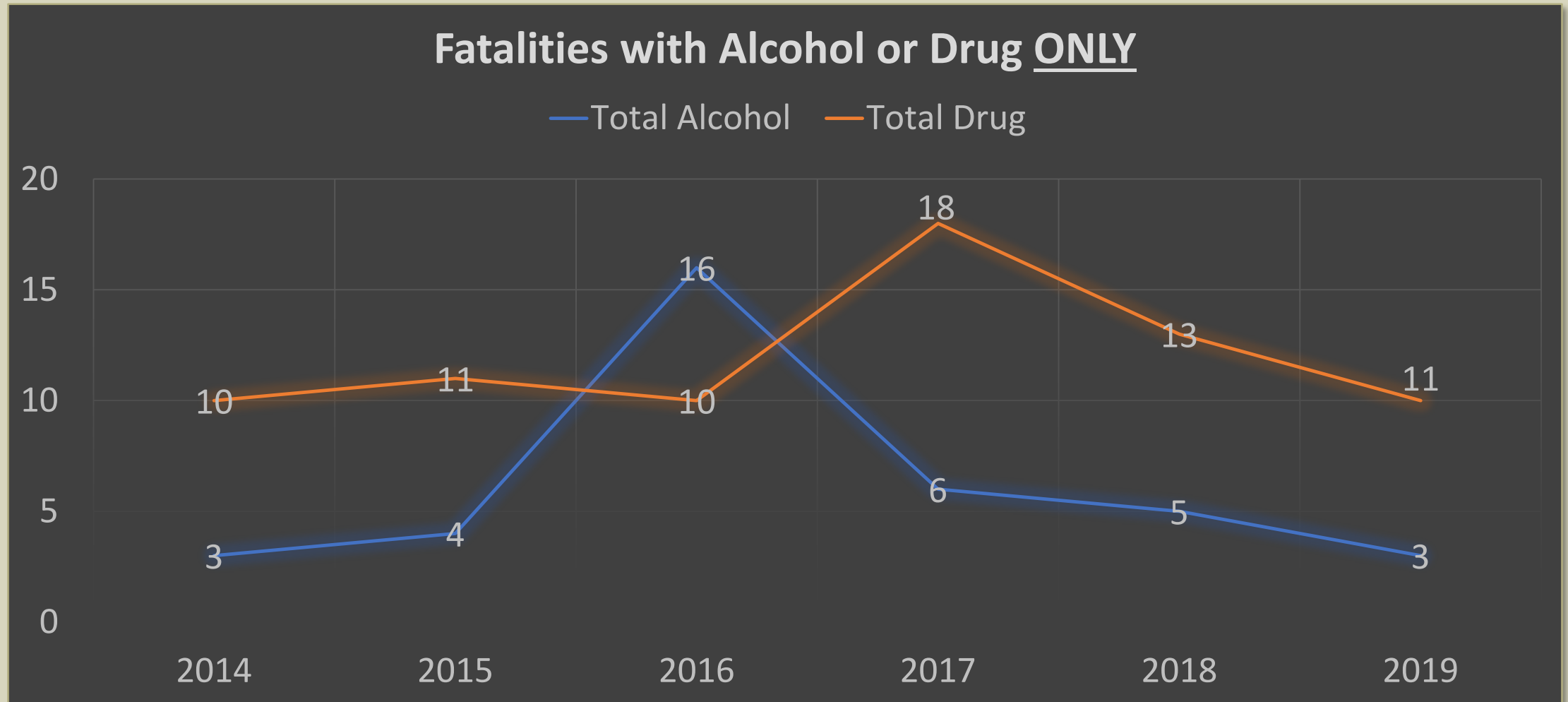
High CB1 Cannabinoid Receptor Density



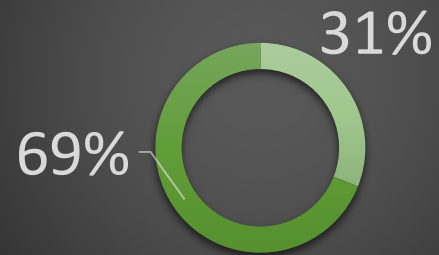
Fatal Crashes and Impairment Rate



ALCOHOL & DRUG FATALITIES

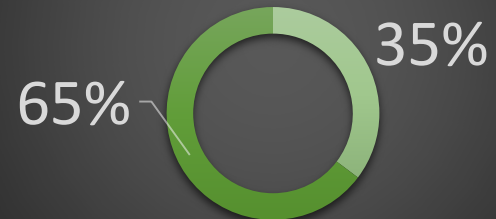


2014 Delta 9 THC Fatalities



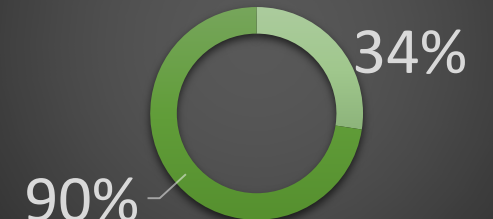
■ Drug Impairment ■ Delta 9 THC

2015 Delta 9 THC Fatalities



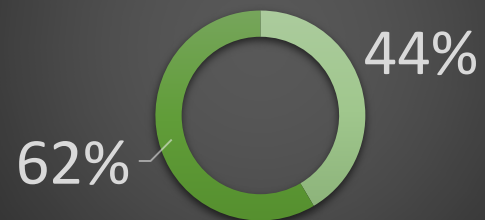
■ Drug Impairment ■ Delta 9 THC

2016 Delta 9 THC Fatalities



■ Drug Impairment ■ Delta 9 THC

2017 Delta 9 THC Fatalities



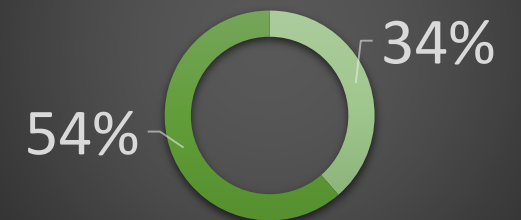
■ Drug Impairment ■ Delta 9 THC

2018 Delta 9 THC Fatalities



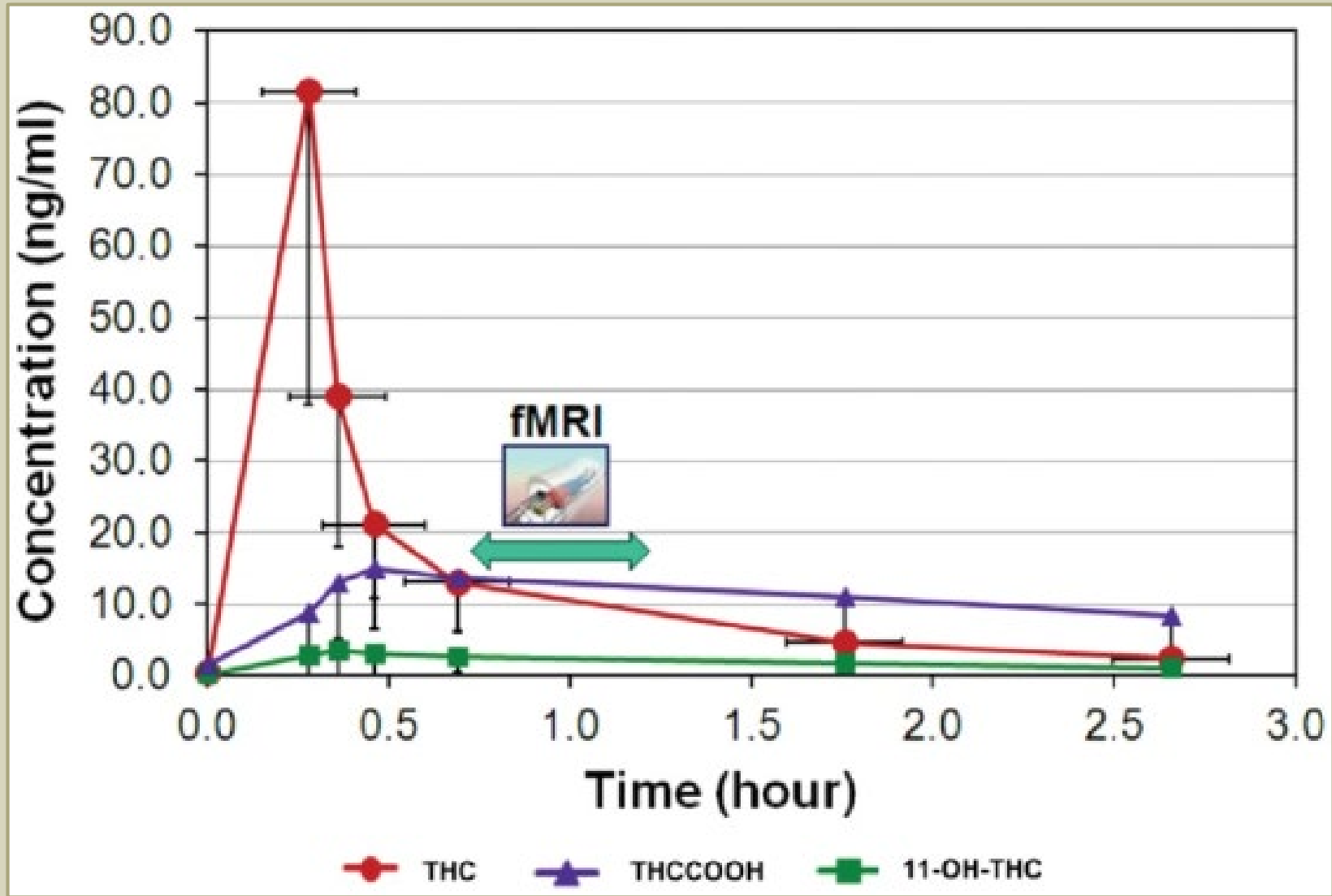
■ Drug Impairment ■ Delta 9 THC

2019 Delta 9 THC Fatalities

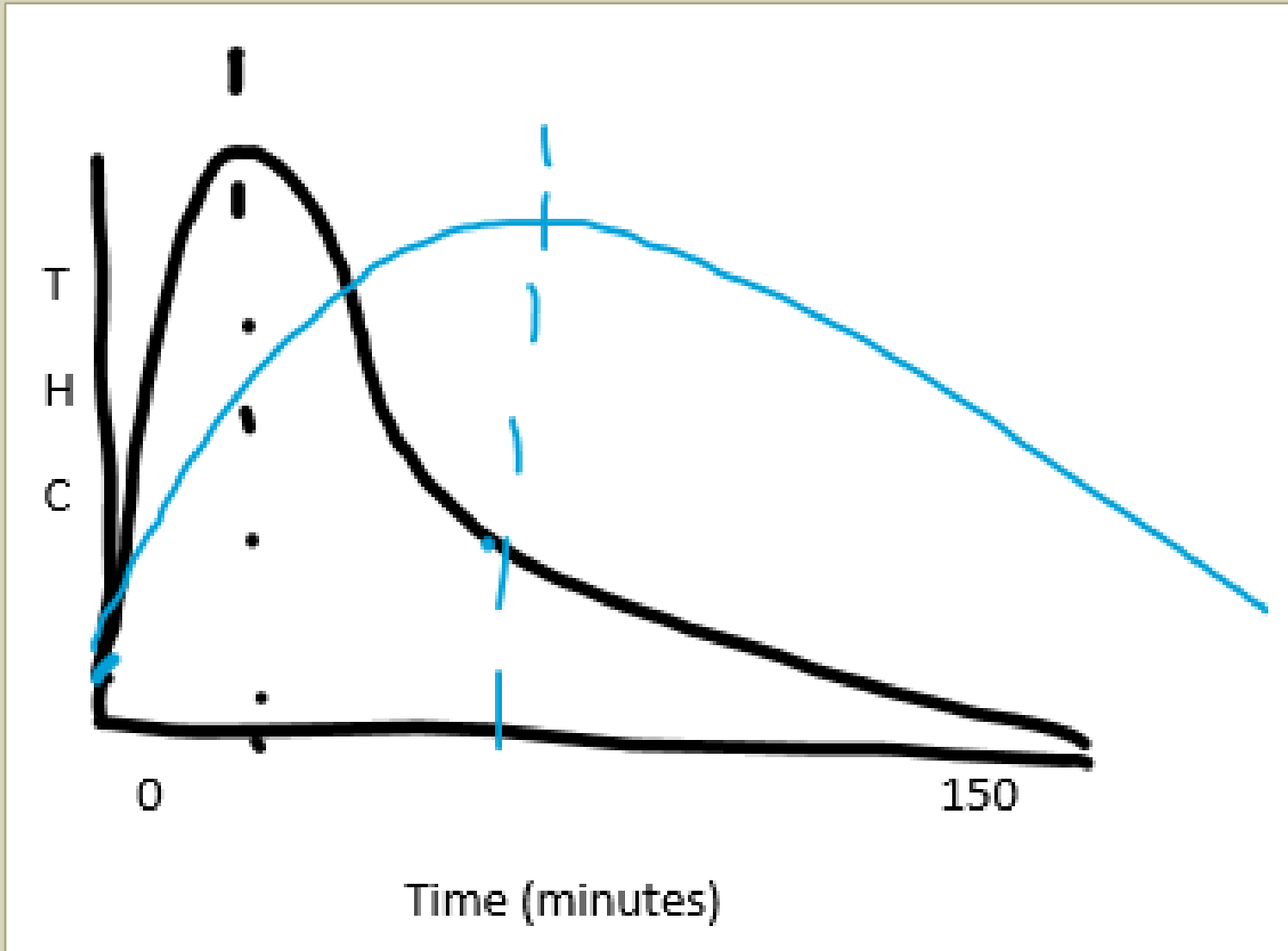


■ Drug Impairment ■ Delta 9 THC

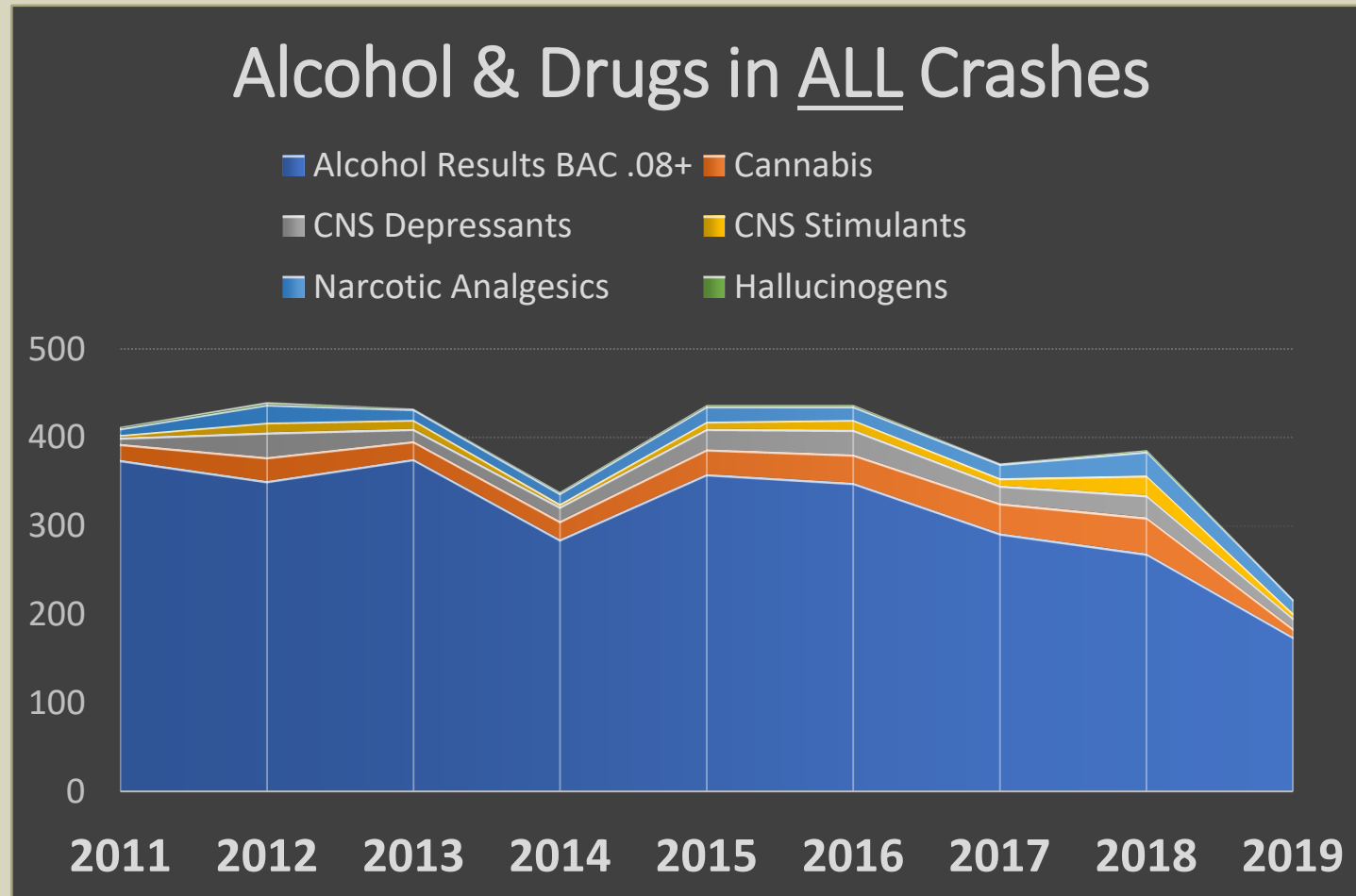
THC CONCENTRATIONS \neq BLOOD LEVELS



FEELING THE “THE GOOD DRUG EFFECT”

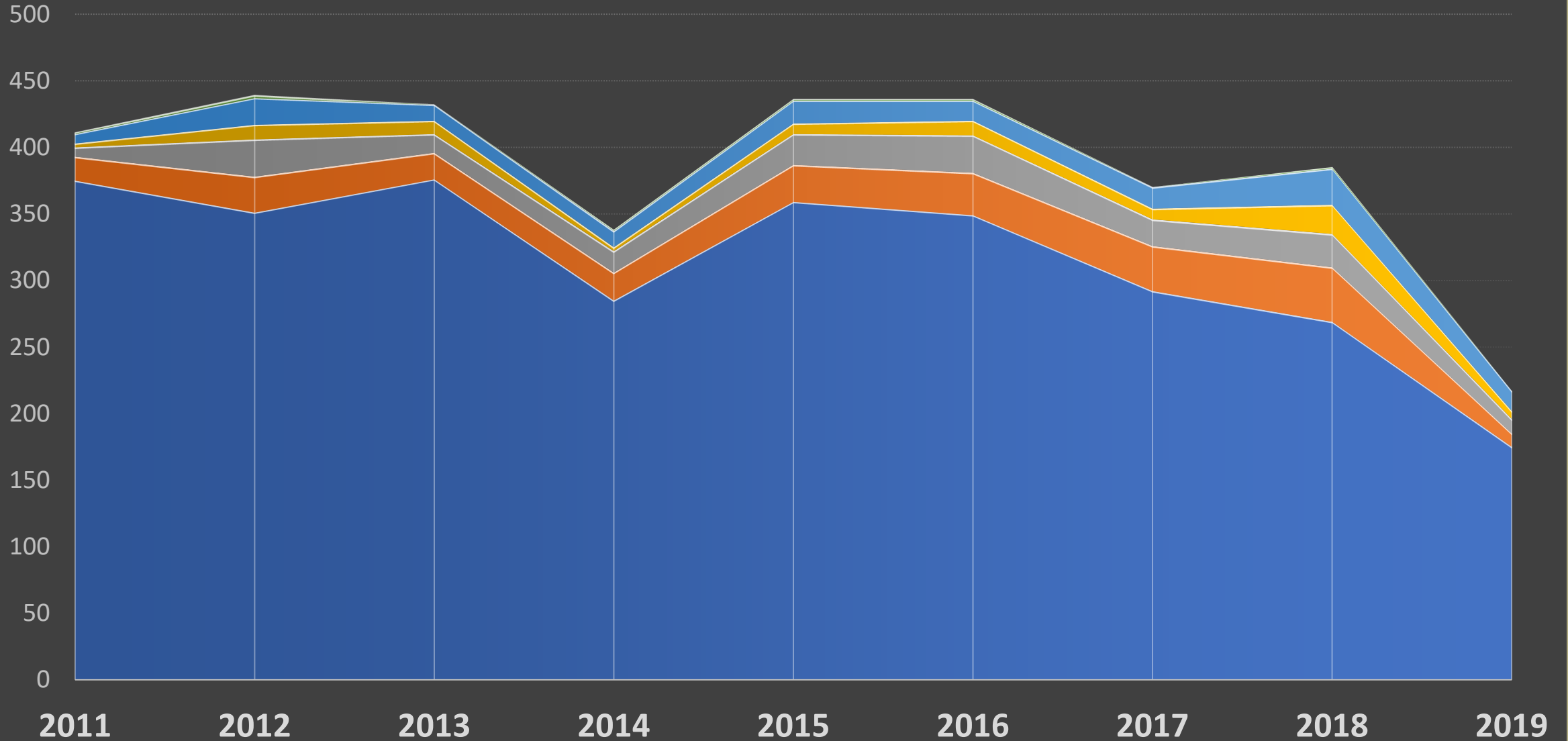


IMPAIRMENT IN ALL CRASHES

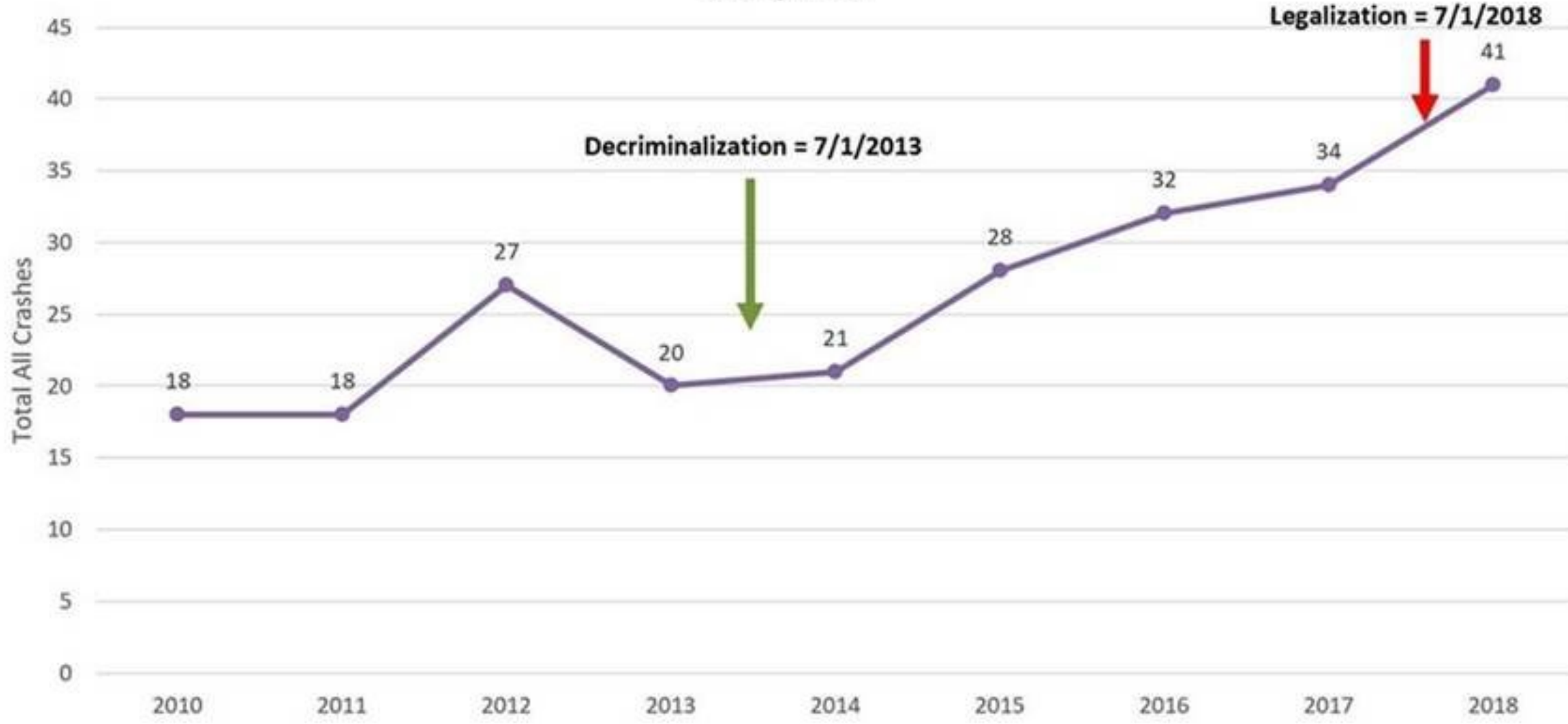


Alcohol & Drugs in ALL Crashes

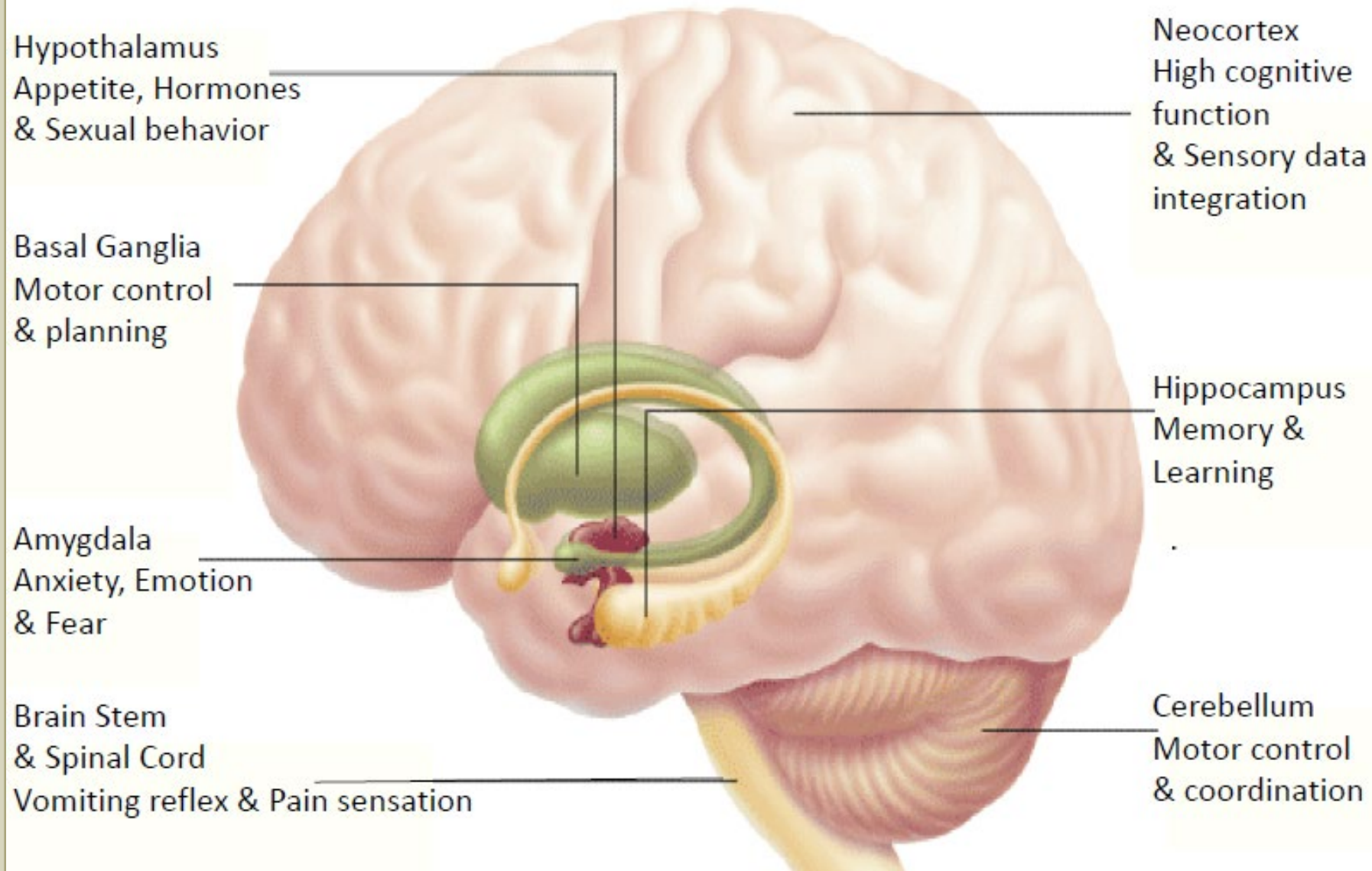
- Alcohol Results BAC .08+
- Cannabis
- CNS Depressants
- CNS Stimulants
- Narcotic Analgesics
- Hallucinogens



Vermont Crashes Related to Marijuana when a Driver Tested Positive for Marijuana



High CB1 Cannabinoid Receptor Density

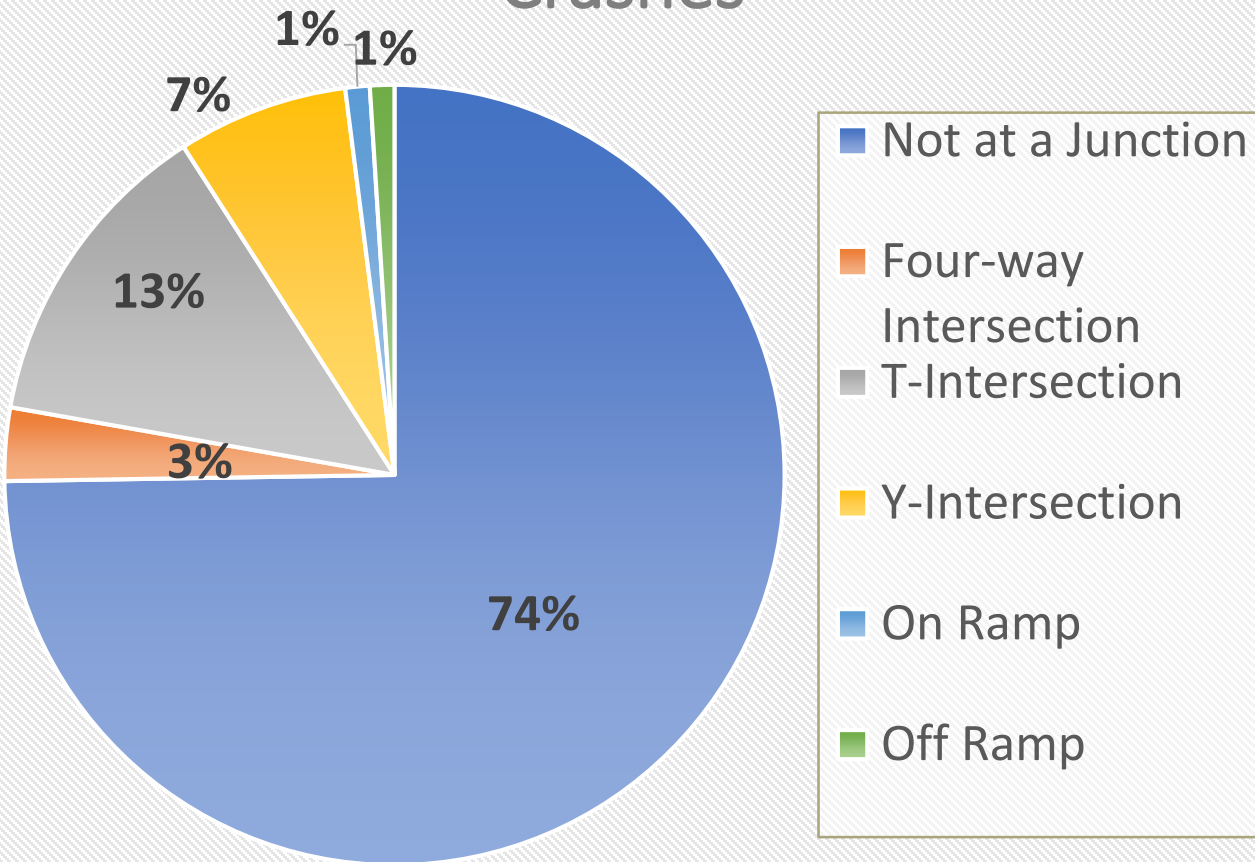


CANNABIS AND DRIVING STUDIES

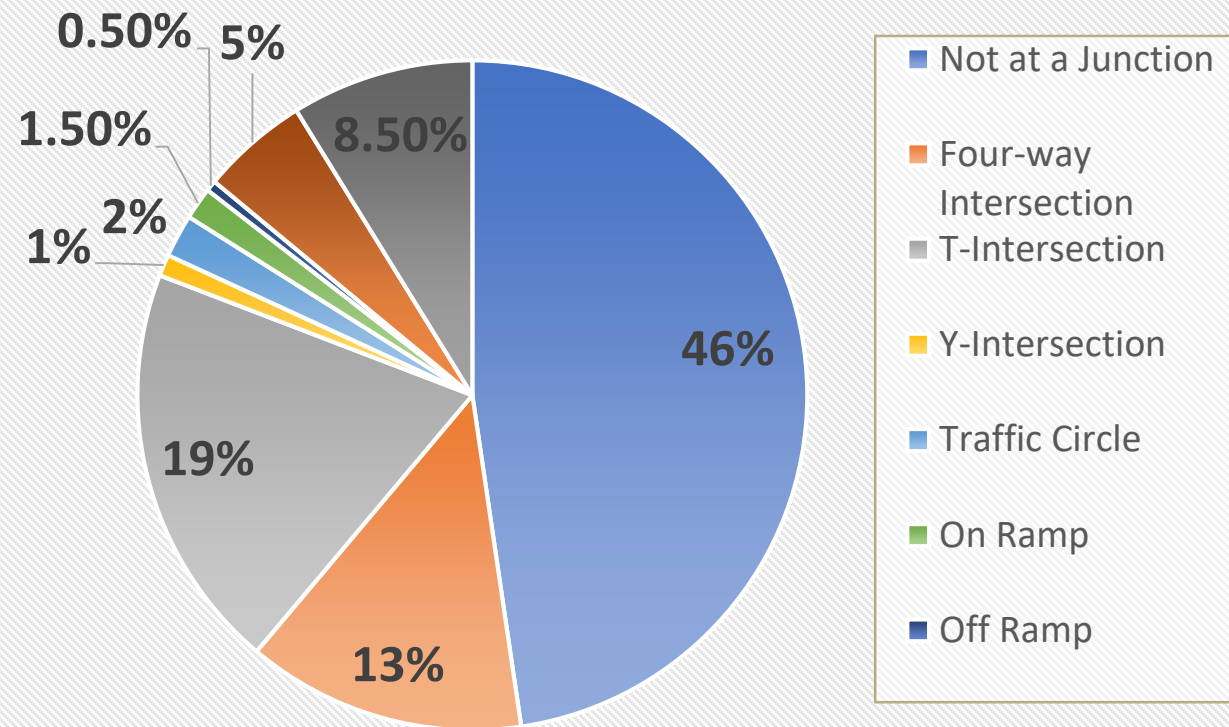
- Cannabis produces dose-related driver impairment
- Cannabis increases SDLP during on-road driving
- Cannabis increases reaction time
 - *This is exacerbated by alcohol*
- **Low THC concentrations and low BAC (<.05)** produce no impairment when given alone, *but impair driving when taken together*

ROAD CHARACTERISTICS

Cannabis-Positive Crashes

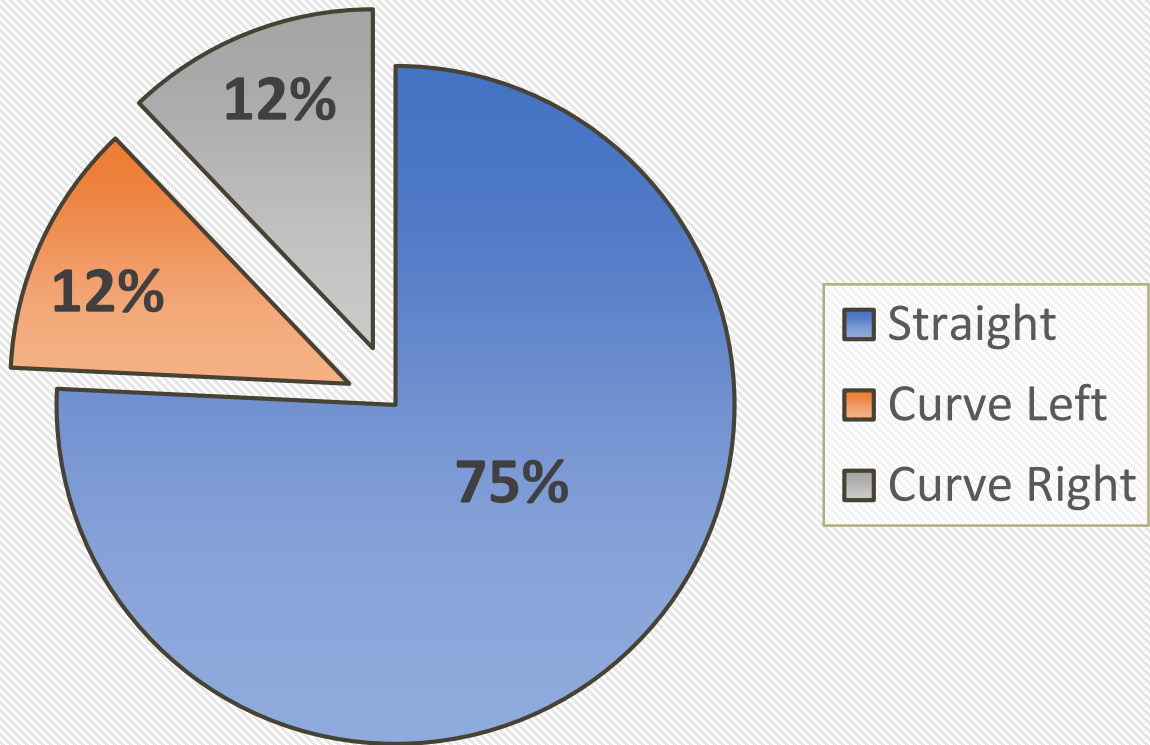


No Impairment Detected Crashes

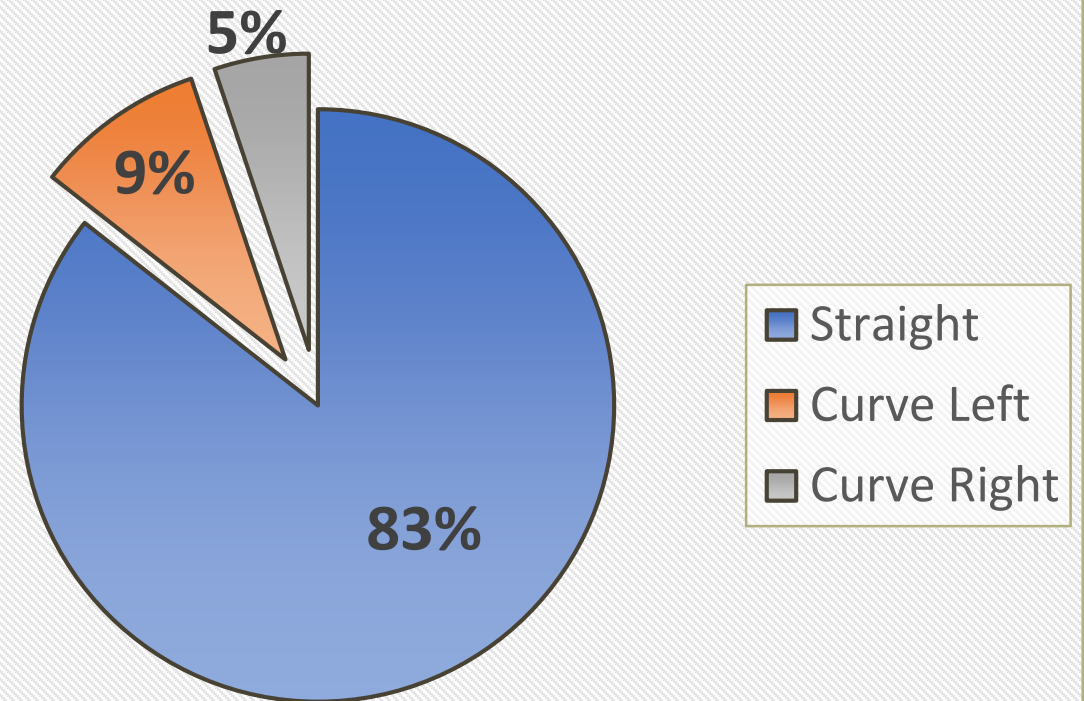


ROAD ALIGNMENT

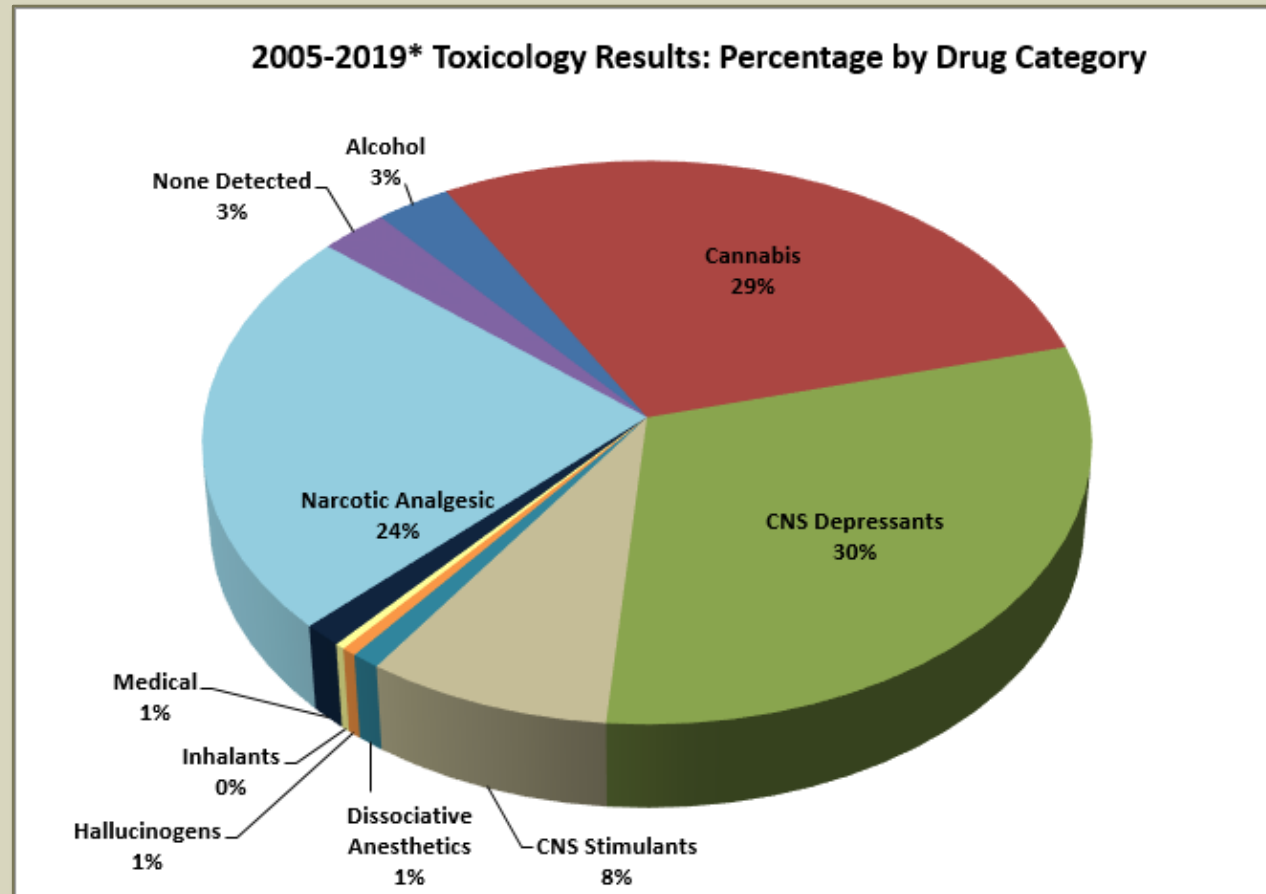
Cannabis-Involved Crashes



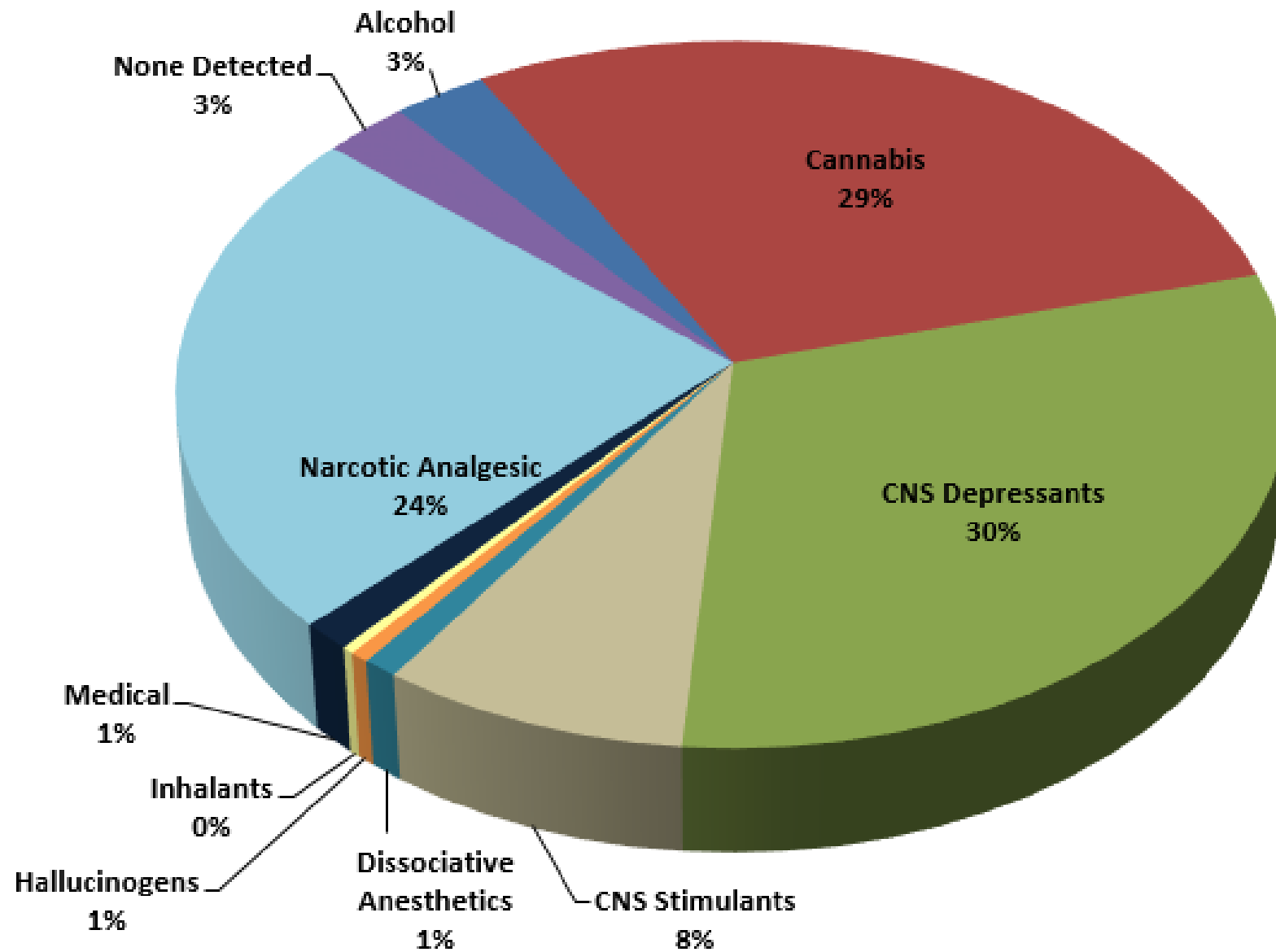
No Impairment Detected Crashes



VERMONT DRE PROGRAM: LIFETIME DRUG CATEGORIES



2005-2019* Toxicology Results: Percentage by Drug Category



Questions?

email: jay.riggen@vermont.gov

cell: 802-585-0277

CANNABIS ON VERMONT ROADWAYS:
TRENDS IN CRASH AND IMPAIRMENT DATA

Sergeant Jay Riggen
Vermont State Police
Traffic Safety Unit

NORTHEAST TRAFFIC SAFETY CONFERENCE