

Fostering Equity in Vermont Highway Safety Efforts

March 26, 2024





WELCOME



Sammy Snider, Eric Tang
VHB





AGENDA

- ▶ Vermont Highway Safety Plan
- ▶ Equity Analysis
- ▶ Outreach Efforts



Vermont Highway Safety Plan

- **Highway Safety Office**
- **3HSP Background**
 - **Bipartisan Infrastructure Law**
 - **New format, larger focus on equity**
- **Public Participation & Engagement Plan**

Vermont Triennial Highway Safety Plan FFY2024-2026



Vermont Triennial Highway Safety Plan



Vermont Annual Grant Application

Federal Fiscal Year 2024



PREPARED FOR



VT State Highway Safety Office
2178 Airport road
Barre, VT 05641
802.595.4661

September 8, 2023

PREPARED BY



1001 G Street NW
Suite 1125
Washington, DC 20001
202.739.9555





Equity Analysis

- **Tools we are using**
- **Building on Existing Efforts - VTrans Equity Tools**
- **Identifying overrepresented and disadvantaged communities**
- **Expanding the equity analysis in future years**



ETC Explorer Overview

USDOT Equitable Transportation Community (ETC) Explorer

ETC Explorer - Homepage | ETC Explorer - National Results | ETC Explorer - State Results | ETC Explorer- Add Your Data (National and State Results) | Transportation Insecurity Analysis Tool | Understanding the Data

To start use selectors, search, or zoom
For additional instructions click the arrow on the left side of the page

Overall Disadvantage Component Scores - Percentile Ranked

Component	Score
Climate & Disaster Risk Burden	50%
Environmental Burden	50%
Health Vulnerability	50%
Social Vulnerability	50%
Transportation Insecurity	50%

Total Population Living in the Selected Project Area

329.8M

Total Population Living in Disadvantaged Census Tracts in the Selected Project Area

109.5M

% of Disadvantaged Census Tracts in the Selected Project Area

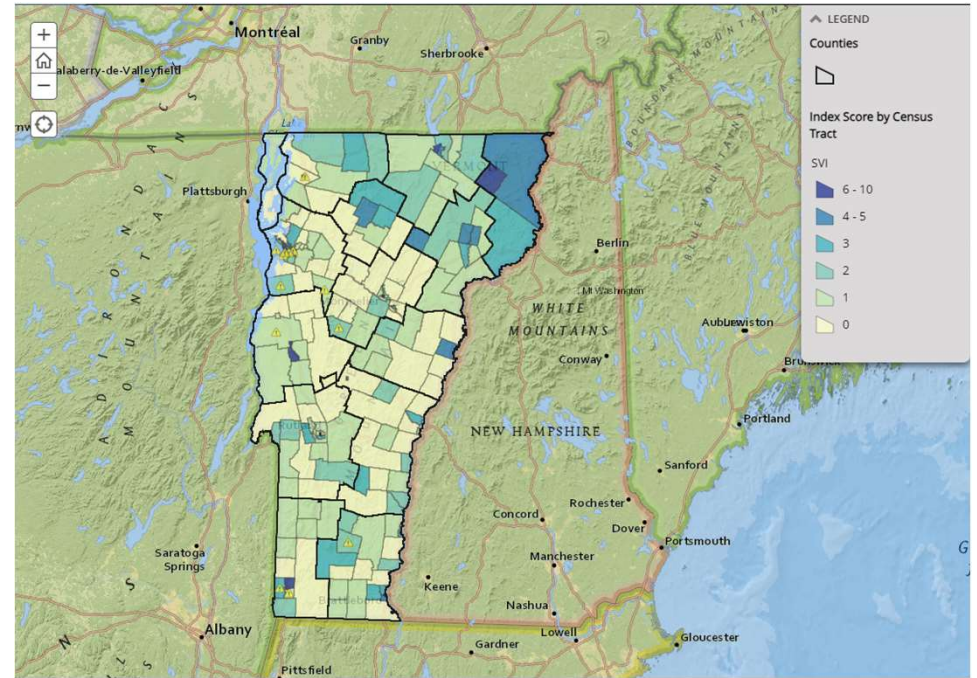
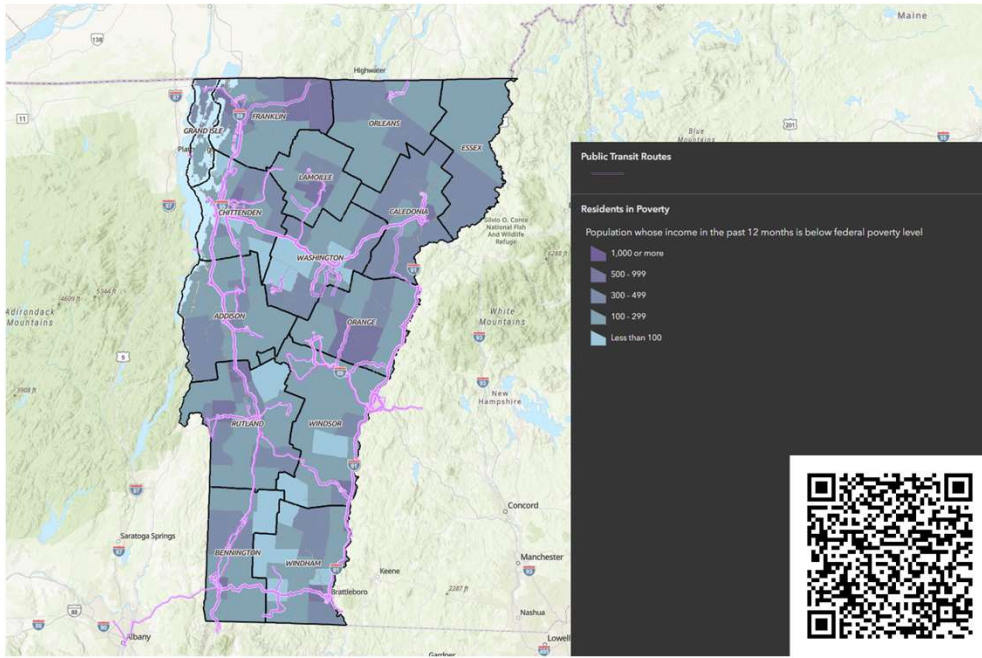
35%

Climate & Disaster Risk Burden - Percentile Rank

Indicator	Score
Anticipated Changes in Extreme Weather	50%
Annualized Disaster Losses	50%
Impervious Surfaces (from Land Cover)	50%



VTrans Equity Tools



VERMONT | AGENCY OF TRANSPORTATION

Equity Framework

Other resources:

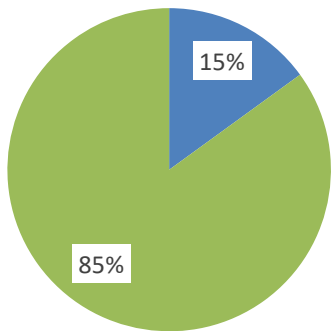
- Mapping Tools User Guide
- For a detailed look into factors rating Vermonters as vulnerable, look to the Vermont Department of Health, Social Vulnerability Index (SVI) Web Application.
- VT SVI
- To explore census data along with environmental factors increasing vulnerability go to the US EPA Environmental Screening Tool
- EPA Screening Tool
- To explore the US Census ACS data which these applications are built on go to the US Census Bureau
- US Census Bureau
- Linguistically Isolated
- Race and Ethnicity
- Residents with Disabilities
- Residents in Poverty
- Foreign Born

Home Diversity, Equity and Inclusion | Linguistically Isolated | Race and Ethnicity | Foreign Born | Population in Poverty | Population with Disabilities



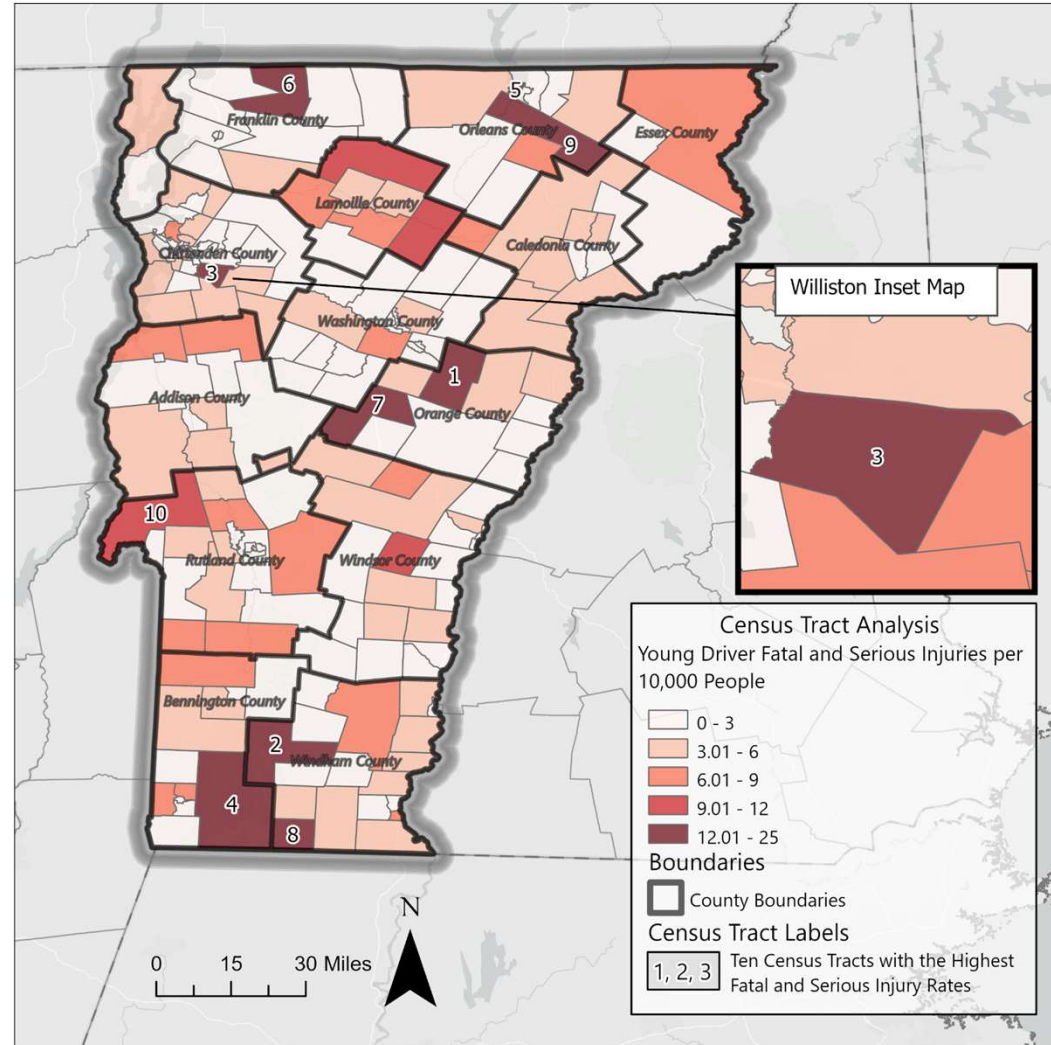
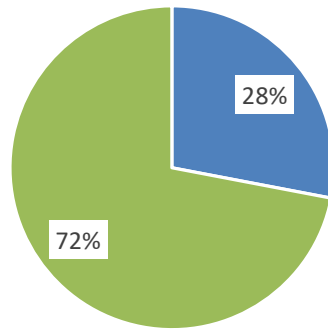
Crash Data Analysis

Vermont Population



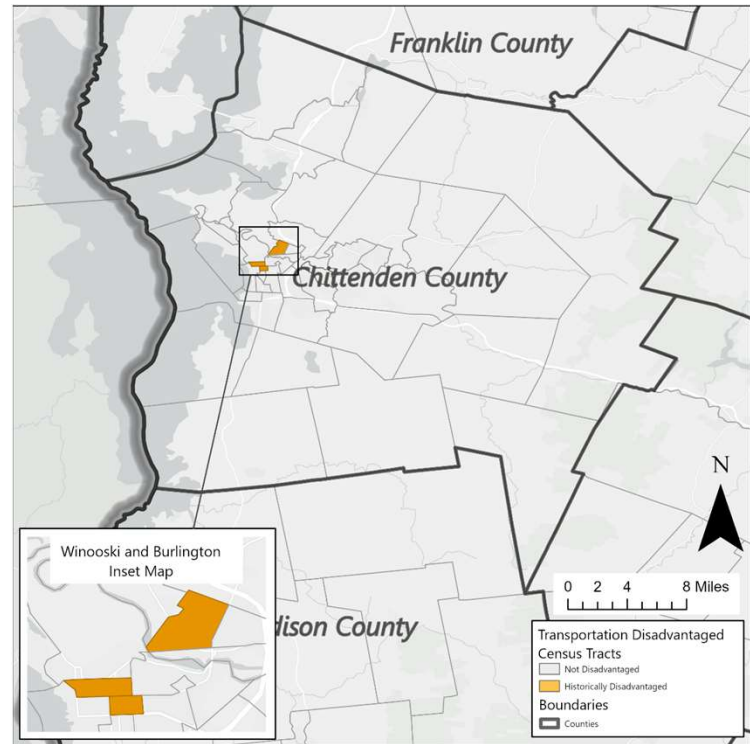
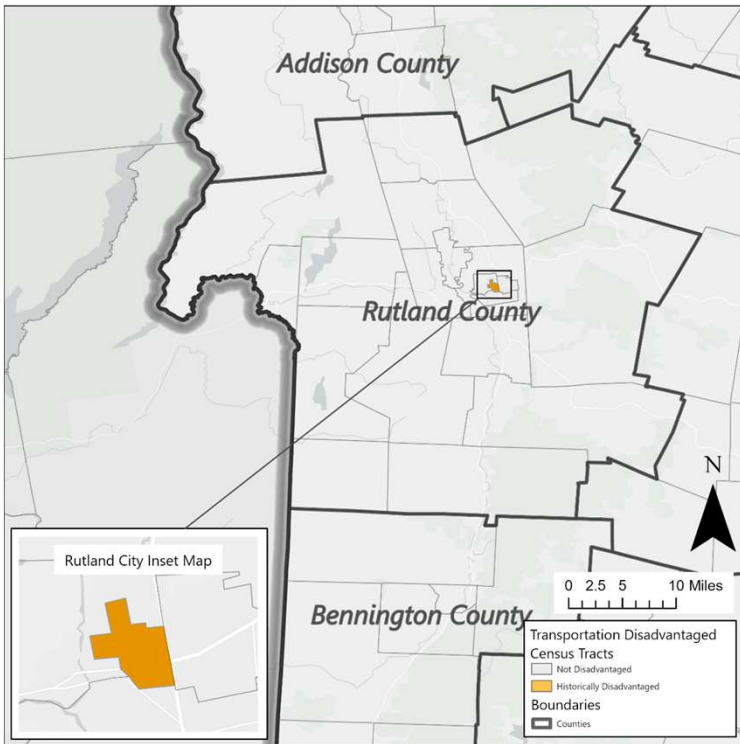
■ Young Driver Aged
■ All Other Drivers

Fatal and Serious Injury Crash Involvement by Age Group





ETC Explorer





Outreach Efforts

- **Choosing locations where outreach efforts are already planned**
 - **Winooski Bridge Replacement**
- **Deploying surveys in the future to gain additional insights**
- **Future Opportunities**





THANK YOU

